

Michelin® Retread Technologies Quick Reference Tread Guide

January 2008



 RETREAD TECHNOLOGIES



MICHELIN® RETREADS QUICK REFERENCE TREAD GUIDE

Product Availability (Tread Depth in Shaded Boxes)

STANDARD SIZES

Tread Size	140	150	160	170	180	190	200	210	220	230	240	250	260	270	
Size \ # DIE			162\#4	168\#5	177\#6	194\#7	203\#8	211\#8.5N	219\#9	225\#9.5	232\#10	238\#10.5	252\#12		
Spread Axle Sizes ⁽¹⁾						185/225	195/235	205/245	215/255	225/265					
XDA2® 23 AT*								23	23	23	23				
XDA2® 19 AT*							19	19	19	19					
XDA®+ AT*							23	23	23	23					
XDA® Hypersipe™										26					
XDA-HT™ <i>High Torque</i>							28	28	28		28	28		28	
XDA®														25	
XD4®							28	28	28	28					
XDN®2									27	27	27				
XDN®					17			26	26	26			25		
XDHT® ⁽²⁾					19	23	23	23	23	23	23				
XDC® LL								14	14						
XDC® 22						22	22	22	22	22					
XDC® 18						18	18	18	18	18					
XM+S4®			21	21	21	21	21	21	21	21					
XDE® M/S			18	18	18	20	20	22	22	22	26	26			
XDS®									25	25		25			
XDU®S									32	32	32	32		32	
XDY®							26	26	26	26		32			
XDY-1™								30	30	30	30	30	30		
XZA® ⁽²⁾	13	13	13	13	13	15	15	15	15	15		20			
XZE® ⁽²⁾				16	18	18	18	18	18	18					
XZE2™												20	20	20	
XZE® SA						18	18	18	18	18					
XZU®S									26	26	26	26		26	
XZY®							18	18	18	18	18	18	20		
XZY-1™								20	20	20	20	20	26		
XZY-2™								26	26	26	26	26	26		
XT-1® AT* ⁽²⁾							12	12	12	12					
XTA®-1 ⁽²⁾						11	11	11	11	11					
XTA®												16		16	
XTY® SA							22	22	22						

For up-to-date product information please visit www.michelintruck.com

*"AT" designated Advanced Technology compounds for fuel savings.

(1) Tread widths with two measurements have wings. The first number is tread base width in mm. The second number is the overall width, wing tip to tip.

(2) Available siped. Consult Michelin Retread Technologies dealers for availability.

WIDE BASE AND X ONE® SIZES

Tread Size	290/345 ⁽¹⁾	320/365 ⁽¹⁾	350/395 ⁽¹⁾	375/425 ⁽¹⁾	380	390
XTE2® Wide Base	20					
XZA® Wide Base	19	19				
XZH™ Wide Base			20			
XZY® Wide Base	20	20	20			
X One® XDA®					24	24
X One® XDA-HT™					26	26
X One® XTA®				13		
X One® XTE®				16		

BUFFING SPECS

SCULP	SIZE	LR	BUFF RADIUS mm	BUFF WIDTH mm	OPT BUFF WIDTH
X One XDA	445/50R22.5	L	2000	380	
X One XDA-HT	445/50R22.5	L	2000	380	
X One XTA	445/50R22.5	L	2000	380	
X One XTE	445/50R22.5	L	2000	380	
	455/55R22.5 *	L	2000	390	
XCA	7.5R17	D	300	140	
XD2	285/70R19.5	H	750	225	219
	255/70R22.5	H	850	211	203
XD4	11R22.5	G	675	230	225
	275/80R22.5	G	675	230	225
	275/80R24.5	G	675	230	225
XDA ENERGY	275/80R22.5	G	675	230	225
XDA3	11R22.5	G	675	230	225
	11R24.5	G	675	230	225
XDA-HT	11R22.5	G	675	230	225
	275/80R22.5	G	675	230	225
XDA-HT	275/80R24.5	G	675	230	225
	11R22.5	H	675	230	225
XDE A/T	12R22.5	H	675	230	225
	11R24.5	H	600	224	219
	225/70R19.5	F	500	194	177
XDE M/S	225/70R19.5	G	500	194	177
	245/70R19.5	H	1000	212	203
	10R22.5	F	675	203	194
	10R22.5	G	675	203	194
	11R22.5	G	675	230	225
	235/80R22.5	G	550	194	177
	255/80R22.5	G	600	203	194
	275/80R22.5	G	675	230	225
	9R22.5	F	550	168	152
	11R22.5 R	H	675	230	225
XDE1	215/75R17.5	F	525	177	168
XDE2+	265/70R19.5	G	550	194	177
	285/70R19.5	H	750	225	219
XDHT	11R22.5	G	675	230	225
	275/80R22.5	G	675	230	225
	11R24.5	G	675	230	225
	275/80R24.5	G	675	230	225
XDL	12.00R24	J	675	225	219
XDN GRIP	315/80R22.5	L	700		
XDN2	11R22.5	G	675	240	225
	11R22.5	H	675	240	225
	12R22.5	H	675	252	250
	275/80R22.5	G	675	240	225
XDS	11R22.5	H	675	230	225
	12R22.5	H	675	230	225
XDY 3	11R22.5	H	675	230	225
	11R22.5	G	675	230	225
	315/80R22.5	L	700		
XDY-2	11R22.5	H	675	230	225
XRV	225/70R19.5	F	500	194	177
	245/70R19.5	F	450	193	177
	235/80R22.5	G	550	194	177
	255/80R22.5	G	600	203	194
XT-1	11R22.5	G	675	230	225
	275/80R22.5	G	675	230	225
	11R24.5	G	675	230	225
	275/80R24.5	G	675	230	225
XTA	10.00R15	J	450	177	168
	7.50R15	H	450	152	140
	8.25R15	H	450	152	140
	215/75R17.5	J	525	177	168
	275/80R22.5	G	675	230	225
XTA ENERGY	275/80R22.5	G	675	230	225
XTA2 ENERGY	245/70R17.5	J	650	203	194
XTE	11R22.5	G	675	230	225
	275/80R22.5	G	675	230	225
	11R24.5	G	675	230	225
	275/80R24.5	G	675	230	225

SCULP	SIZE	LR	BUFF RADIUS mm	BUFF WIDTH mm	OPT BUFF WIDTH
XTE2	285/70R19.5	J	750	225	219
XTE2 (Wide Base)	385/65R22.5	L	1300	286	
	425/65R22.5	L	1300	318	290
	445/65R22.5	L	1200	340	320
XTY2	275/70R22.5	J	850	225	219
XZ2	12R22.5	H	675	230	225
XZA	10R17.5	G	500	168	152
	8R19.5	F	300	152	140
	305/70R19.5	J	950	238	232
XZA3	11R22.5	G	675	230	225
	11R22.5	H	675	230	225
	275/80R22.5	G	675	230	225
	275/80R22.5	H	675	230	225
	11R24.5	G	675	230	225
XZA1	275/80R24.5	G	675	230	225
XZA-1	315/80R22.5	L	700	240	238
XZA-1	11R22.5	G	675	230	225
XZA-1B	275/80R22.5	G	675	230	225
	11R24.5	G	675	230	225
	275/80R24.5	G	600	218	211
XZA2	11R22.5	G	675	230	225
	275/80R22.5	G	675	230	225
	11R24.5	G	675	230	225
	275/80R24.5	G	675	230	225
XZA2 Energy	275/70R22.5	J	850	225	219
	295/80R22.5	H	675	225	219
	315/80R22.5	L	700		
XZA4	G20 (14.00R20)	M	675	273	
XZE	225/70R19.5	G	500	194	177
	225/70R19.5	F	500	194	177
	245/70R19.5	F	600	210	203
	245/70R19.5	H	1000	211	203
	9R22.5	F	550	168	152
	10R22.5	G	675	203	194
	10R22.5	F	675	203	194
	11R22.5	G	675	230	225
	11R22.5 R	H	675	230	225
	12R22.5 R	H	675	230	225
	235/80R22.5	G	550	194	177
	255/80R22.5	G	600	203	194
	255/70R22.5 *	H	850	211	194
	275/80R22.5	G	675	230	225
	11R24.5	G	675	230	225
11R24.5 R	H	675	230	225	
275/80R24.5	G	675	230	225	
XZE1	215/75R17.5	F	525	177	168
XZE2	9.00R20	G	600	177	168
	10.00R20	H	600	219	216
	11.00R20	H	600	219	216
	12.00R20	J	675	230	225
XZE2+	265/70R19.5	G	550	194	177
	285/70R19.5	H	750	225	219
	275/70R22.5	J	850	225	219
	295/80R22.5	H	675	225	219
XZL (Wide Base)	425/65R22.5	L	1300	318	290
	445/65R22.5	L	1200	365	320
XZY	12.00R24	J	675	225	219
XZY 3	12R22.5	H	675	230	225
XZY 3 (Wide Base)	385/65R22.5	J	1300	286	
	425/65R22.5	L	1300	318	290
	445/65R22.5	L	1200	340	320
XZY-2	11R22.5	H	675	230	225
	11R24.5	H	675	230	225


* With tread compound for chip and cut resistance.

RETREAD TREAD DESIGN

DRIVE POSITION

XDA2® 19 & XDA2® 23 Pre-Mold™ Retread

- Fuel-efficient Advanced Technology™ compound
- No compromise performance
- Modified tread block design optimized for long, even wear
- XDA2® 19 - 19/32nds tread depth and XDA2® 23 - 23/32nds tread depth
- XDA2® 23 - also available as a Custom Mold™ retread



LH	R	O/O	U
----	---	-----	---

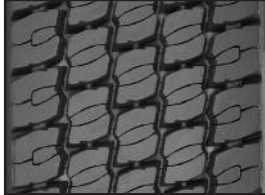
XDA2® 19 Pre-Mold™ Retread Data
XDA2® 23 Pre-Mold™ Retread Data

Width	XDA2 19 Tread Depth	XDA2 23 Tread Depth
203 \ 8.0	19/32"	—
211 \ 8.5	19/32"	23/32"
219 \ 9.0	19/32"	23/32"
225 \ 9.5	19/32"	23/32"
232 \ 10.0	—	23/32"

DRIVE POSITION

XDA® Hypersipe™ Pre-Mold™ Retread

- Unique, regenerative siping to help maintain traction for more usable 32nds
- Uniform block rigidity helps provide long, smooth wear
- Compounding and profile yields a cooler running tread and improved rolling resistance for better fuel economy*
- Extra high density of cross siping for reliable traction



LH	R	O/O	U
----	---	-----	---

XDA® Hypersipe™ Pre-Mold™ Retread Data


Width	Tread Depth
230	26/32"

* Compared to Michelin standard compound.

DRIVE POSITION

XDA®+ AT Pre-Mold™ Retread

- Fuel-efficient Advanced Technology™ compound
- No compromise performance
- Block design for long mileage and even wear
- 23/32nds tread depth



LH	R	O/O	U
----	---	-----	---


XDA®+ AT Pre-Mold™ Retread Data

Width	Tread Depth
203 \ 8.0	23/32"
211 \ 8.5	23/32"
219 \ 9.0	23/32"
225 \ 9.5	23/32"

DRIVE POSITION

XDA-HT™ High Torque™ Pre-Mold™ Retread

- Unique two compound design to help deliver long mileage and to help minimize internal casing temperatures
- Solid shoulder design optimized for long, smooth wear
- Open lug design helps provide excellent traction in adverse conditions
- 28/32nds tread depth



LH	R	O/O	U
----	---	-----	---


XDA-HT™ High Torque™ Pre-Mold™ Retread Data

Width	Tread Depth
200 mm	28/32"
210 mm	28/32"
220 mm	28/32"
230 mm	28/32"
240 mm	28/32"

DRIVE POSITION

XD4® Pre-Mold™ Retread

- Extra deep tread design optimized for high torque applications e.g. 4x2's
- Open shoulder design helps deliver exceptional traction
- 28/32nds tread depth
- Unique scrub resistant compound
- Also available as a Custom Mold™ retread.



LH	R	O/O	U
----	---	-----	---


XD4® Pre-Mold™ Retread Data

Width	Tread Depth
203 \ 8.0	28/32"
210	28/32"
220	28/32"
230	28/32"

DRIVE POSITION

XDN®2 Pre-Mold™ Retread

- Exclusive, unique two-layer compound designed to minimize internal casing temperatures for longer tread & casing life
- Outstanding winter and wet traction utilizing Michelin's patented *Matrix*™ Siping technology
- Wide open shoulder grooves help deliver traction without compromising tread life
- 27/32nds tread depth



LH	R	O/O	U
----	---	-----	---

XDN®2 Pre-Mold™ Retread Data

Width	Tread Depth
220	27/32"
230	27/32"
240	27/32"

RETREAD TREAD DESIGN

DRIVE POSITION

XDN® Pre-Mold™ Retread

- Excellent traction levels in snow and ice conditions
- Sipes and lateral inter-locking grooves for rain and snow evacuation
- Excellent mileage
- Square shoulder for stability
- 17/32nds or 26/32nds tread depth – depending on tread width
- Also available as a Custom Mold™ retread



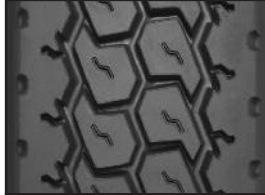
XDN® Pre-Mold™ Retread Data

Width	Tread Depth
180 mm	17/32"
210 mm	26/32"
220 mm	26/32"
230 mm	26/32"
250 mm	25/32"

DRIVE POSITION

XDHT® Pre-Mold™ Retread

- Solid shoulder design optimized for high scrub applications
- Block design optimized for high torque applications
- 19/32nds or 23/32nds tread depth – depending on tread width
- Available siped
- Also available as a Custom Mold™ retread



XDHT® Pre-Mold™ Retread Data

Width	Tread Depth
180 mm	19/32"
194 \ 7.0	23/32"
203 \ 8.0	23/32"
211 \ 8.5	23/32"
219 \ 9.0	23/32"
225 \ 9.5	23/32"
232 \ 10.0	23/32"

DRIVE POSITION

XDA® Pre-Mold™ Retread

- Square shoulder for stability
- Slow, even wear
- Excellent mileage
- 25/32nds tread depth



XDA® Pre-Mold™ Retread Data

Width	Tread Depth
260 mm	25/32"

DRIVE POSITION

XDC® 18 & XDC® 22 Pre-Mold™ Retread

- Open shoulder design optimized for exceptional traction
- Solid center rib promotes long, even wear
- Classic drive axle design helps deliver excellent wear and traction
- XDC® 18 – 18/32nds tread depth and XDC® 22 – 22/32nds tread depth



XDC® 18 Pre-Mold™ Retread Data XDC® 22 Pre-Mold™ Retread Data

Width	XDC 18	XDC 22
	Tread Depth	Tread Depth
194 \ 7.0	18/32"	22/32"
203 \ 8.0	18/32"	22/32"
211 \ 8.5	18/32"	22/32"
219 \ 9.0	18/32"	22/32"
225 \ 9.5	18/32"	22/32"

DRIVE POSITION

XDC® LL Pre-Mold™ Retread

- Designed for trade-in vehicles
- Meets truck manufacturers trade-in requirements
- 14/32nds tread depth



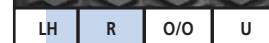
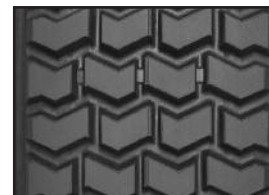
XDC® LL Pre-Mold™ Retread Data

Width	Tread Depth
210	14/32"
220	14/32"

DRIVE POSITION

XM+S4® Pre-Mold™ Retread

- Standard highway compound
- Open lug tread design promotes self-cleaning of lugs and helps maximize mud and snow traction
- Chevron block design for high traction and low noise
- 21/32nds tread depth



XM+S4® Pre-Mold™ Retread Data


Width	Tread Depth
162 \ 4.0	21/32"
168 \ 5.0	21/32"
177 \ 6.0	21/32"
194 \ 7.0	21/32"
203 \ 8.0	21/32"
211 \ 8.5	21/32"
219 \ 9.0	21/32"
225 \ 9.5	21/32"

RETREAD TREAD DESIGN

DRIVE POSITION

XDE® M/S Pre-Mold™ Retread

- Open shoulder tread design optimized to help deliver high traction while providing excellent treadwear
- Offset shoulder blocks help provide added traction in mud and soft soil conditions
- 18/32nds, 20/32nds, 22/32nds, or 26/32nds tread depth depending on tread width



LH	R	O/O	U
----	---	-----	---


XDE® M/S Pre-Mold™ Retread Data

Width		Tread Depth	
160 mm	18/32"	210 mm	22/32"
170 mm	18/32"	220 mm	22/32"
180 mm	18/32"	230 mm	22/32"
190 mm	20/32"	240 mm	26/32"
200 mm	20/32"	250 mm	26/32"

DRIVE POSITION

XDS® Pre-Mold™ Retread

- Unique Michelin compounding and tread siping to help deliver outstanding traction in severe snow conditions
- Extensive full-width sipes and lateral grooves for effective rain and snow evacuation
- Directional tread optimized for traction
- Also available as a Custom Mold™ retread
- 25/32nds tread depth



LH	R	O/O	U
----	---	-----	---

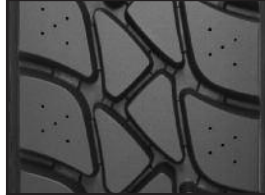
XDS® Pre-Mold™ Retread Data

Width	Tread Depth
220 mm	25/32"
230 mm	25/32"
250 mm	25/32"

DRIVE POSITION

XDU®S Pre-Mold™ Retread

- More rubber mass to aid in scrub resistance
- Exclusive, unique two-layer compound designed to minimize internal casing temperatures for long tread & casing life
- Proprietary compound specifically formulated for demanding, high scrub operations
- Lug design optimized for high scrub, high traction operations
- 32/32nds tread depth



LH	R	O/O	U
----	---	-----	---


XDU®S Pre-Mold™ Retread Data

Width	Tread Depth
220 mm	32/32"
230 mm	32/32"
240 mm	32/32"
250 mm	32/32"
270 mm	32/32"

DRIVE POSITION

XDY® Pre-Mold™ Retread

- Compound for chip and cut resistance
- Deep tread for traction and mileage
- 26/32nds or 32/32nds tread depth depending on tread width



LH	R	O/O	U
----	---	-----	---


XDY® Pre-Mold™ Retread Data

Width	Tread Depth
203 \ 8.0	26/32"
211 \ 8.5	26/32"
219 \ 9.0	26/32"
225 \ 9.5	26/32"
232 \ 10.0	26/32"
238 \ 10.5	26/32"
240 mm	32/32"
252 \ 12.0	32/32"

DRIVE POSITION

XDY-1™ Pre-Mold™ Retread

- Compound for chip and cut resistance
- Directional tread optimized for traction
- Extra deep tread for extra protection and mileage
- 30/32nds tread depth



LH	R	O/O	U
----	---	-----	---

XDY-1™ Pre-Mold™ Retread Data

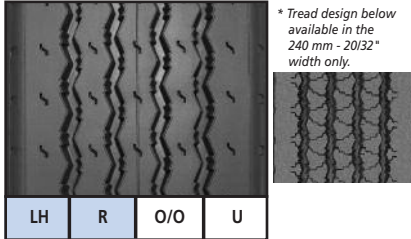
Width	Tread Depth
211 \ 8.5	30/32"
219 \ 9.0	30/32"
225 \ 9.5	30/32"
232 \ 10.0	30/32"
238 \ 10.5	30/32"
250 mm	30/32"

RETREAD TREAD DESIGN

ALL-WHEEL POSITION

XZA® Pre-Mold™ Retread

- Solid shoulder to help withstand scrub and abrasion
- Designed for long mileage and even wear
- Available siped
- Also available as a Custom Mold™ retread
- 13/32nds, 15/32nds or 20/32nds tread depth depending on tread width



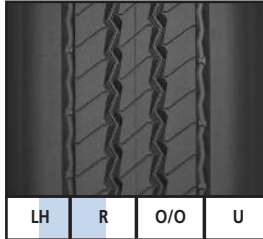
XZA® Pre-Mold™ Retread Data

Width		Tread Depth	
140 mm	13/32"	203 \ 8.0	15/32"
150 mm	13/32"	211 \ 8.5	15/32"
160 mm	13/32"	219 \ 9.0	15/32"
170 mm	13/32"	225 \ 9.5	15/32"
180 mm	13/32"		
194 \ 7.0	15/32"	* 240 mm	20/32"

ALL-WHEEL POSITION

XZE® SA Pre-Mold™ Retread

- Rounded shoulders to help minimize scrub effects typical of spread axle applications
- Tapered tread extensions to help withstand shifting footprint stress typical of spread axle applications while helping to maintain casing durability
- 18/32nds tread depth



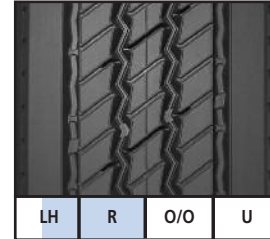
XZE® SA Pre-Mold™ Retread Data

Width	Tread Depth
185/225 mm ⁽¹⁾	18/32"
195/235 mm ⁽¹⁾	18/32"
205/245 mm ⁽¹⁾	18/32"
215/255 mm ⁽¹⁾	18/32"
225/265 mm ⁽¹⁾	18/32"

ALL-WHEEL POSITION

XZE® Pre-Mold™ Retread

- Solid shoulders to help withstand scrub and abrasion
- Deep siping for optimized traction
- Deep tread depth designed for long mileage
- Available siped
- Also available as a Custom Mold™ retread
- 16/32nds or 18/32nds tread depth depending on tread width



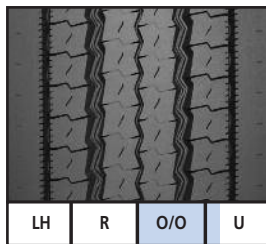
XZE® Pre-Mold™ Retread Data

Width	Tread Depth
168 \ 5.0	16/32"
177 \ 6.0	18/32"
194 \ 7.0	18/32"
203 \ 8.0	18/32"
211 \ 8.5	18/32"
219 \ 9.0	18/32"
225 \ 9.5	18/32"

ALL-WHEEL POSITION

XZE2™ Pre-Mold™ Retread

- Good traction
- Compound optimized for regional and over-the-road operations
- Center grooves for good water evacuation
- Performs well in both high scrub and low scrub conditions
- 20/32nds tread depth



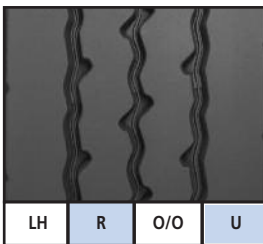
XZE2™ Pre-Mold™ Retread Data

Width	Tread Depth
240 mm	20/32"
250 mm	20/32"
260 mm	20/32"

ALL-WHEEL POSITION

XZU®S Pre-Mold™ Retread

- More rubber mass to aid in scrub resistance
- Exclusive, unique two-layer compound designed to minimize internal casing temperatures for long tread & casing life
- Proprietary compound specifically formulated for demanding, high scrub operations
- Rib design optimized for high scrub, medium traction operations
- 26/32nds tread depth



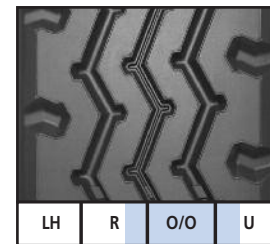
XZU®S Pre-Mold™ Retread Data

Width	Tread Depth
220 mm	26/32"
230 mm	26/32"
240 mm	26/32"
250 mm	26/32"
270 mm	26/32"

ALL-WHEEL POSITION

XZY® Pre-Mold™ Retread

- Compound for chip and cut resistance
- Rib design optimized for quiet running and even wear
- All wheel position capable
- Shoulder scallops help provide additional traction
- 18/32nds or 20/32nds tread depth depending on tread width



XZY® Pre-Mold™ Retread Data

Width	Tread Depth
203 \ 8.0	18/32"
211 \ 8.5	18/32"
219 \ 9.0	18/32"
225 \ 9.5	18/32"
232 \ 10.0	18/32"
238 \ 10.5	18/32"
250 mm	20/32"

LH – Long Haul, R – Regional, O/O – On/Off Road, U – Urban

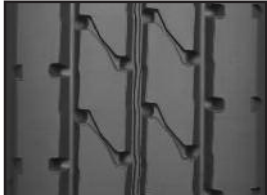
(1) Tread widths with two measurements have wings. The first number is tread base width in mm. The second number is the overall width, wing tip to tip.

RETREAD TREAD DESIGN

ALL-WHEEL POSITION

**XZY-1™
Pre-Mold™ Retread**

- Compound for chip and cut resistance
- Square shoulder helps increase ground contact
- All-wheel-position capable
- 20/32nds or 26/32nds tread depth depending on tread width



LH	R	O/O	U
----	---	-----	---


XZY-1™ Pre-Mold™ Retread Data

Width	Tread Depth
211 \ 8.5	20/32"
219 \ 9.0	20/32"
225 \ 9.5	20/32"
232 \ 10.0	20/32"
238 \ 10.5	20/32"
252 \ 12.0	26/32"

ALL-WHEEL POSITION

**XZY-2™
Pre-Mold™ Retread**

- Compound for chip and cut resistance
- Square buttressed shoulder helps provide impact protection from road hazards
- Zig zag tread grooves and shoulder traction scallops help enhance traction in virtually all weather conditions
- 26/32nds tread depth



LH	R	O/O	U
----	---	-----	---

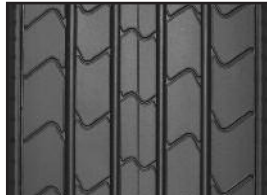
XZY-2™ Pre-Mold™ Retread Data

Width	Tread Depth
210 mm	26/32"
220 mm	26/32"
230 mm	26/32"
240 mm	26/32"
250 mm	26/32"

TRAILER POSITION

**XT-1® AT
Pre-Mold™ Retread**

- Fuel efficient Advanced Technology™ compound
- No Compromise performance
- 12/32nds tread depth
- Available siped
- Also available as a Custom Mold™ retread



LH	R	O/O	U
----	---	-----	---


XT-1® AT Pre-Mold™ Retread Data

Width	Tread Depth
203 \ 8.0	12/32"
211 \ 8.5	12/32"
219 \ 9.0	12/32"
225 \ 9.5	12/32"

TRAILER POSITION

**XTA®-1
Pre-Mold™ Retread**

- Solid shoulder to withstand most scrub and abrasion
- No compromise performance
- 11/32nds tread depth
- Available siped
- Also available as a Custom Mold™ retread



LH	R	O/O	U
----	---	-----	---


XTA®-1 Pre-Mold™ Retread Data

Width	Tread Depth
194 \ 7.0	11/32"
203 \ 8.0	11/32"
211 \ 8.5	11/32"
219 \ 9.0	11/32"
225 \ 9.5	11/32"

TRAILER POSITION

**XTA®
Pre-Mold™ Retread**

- Excellent stability
- Good resistance in high scrub operations
- 16/32nds tread depth



LH	R	O/O	U
----	---	-----	---


XTA® Pre-Mold™ Retread Data

Width	Tread Depth
240 mm	16/32"
260 mm	16/32"

TRAILER POSITION

**XTY® SA
Pre-Mold™ Retread**

- Application specific compound for chip and cut resistance
- Tapered tread extensions to help withstand shifting footprint stress typical of spread axle and multi-axle applications
- Aggressive tread design for demanding regional and on/off road trailer operations
- 22/32nds tread depth



LH	R	O/O	U
----	---	-----	---

XTY® SA Pre-Mold™ Retread Data

Width	Tread Depth
195/235 mm ⁽¹⁾	22/32"
205/245 mm ⁽¹⁾	22/32"
215/255 mm ⁽¹⁾	22/32"

LH – Long Haul, R – Regional, O/O – On/Off Road, U – Urban

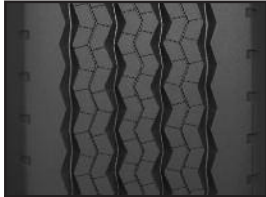
(1) Tread widths with two measurements have wings. The first number is tread base width in mm. The second number is the overall width, wing tip to tip.

RETREAD TREAD DESIGN

WIDE BASE RETREADS

XTE2[®] WIDE BASE Pre-Mold™ Retread

- Wide grooves help provide exceptional water evacuation
- Wide shoulder rib to help resist scrub and abrasion
- Tapered tread extensions to help withstand shifting footprint stress typical of wide base service
- 20/32nds tread depth



XTE2[®] WIDE BASE Pre-Mold™ Retread Data

Width	Tread Depth
290/345 mm ⁽¹⁾	20/32"

WIDE BASE RETREADS

XZH[®] WIDE BASE Pre-Mold™ Retread

- Compound for abrasion-resistance
- Self-cleaning lugs, open shoulder design for exceptional traction and excellent floatation
- Tapered tread extensions to help withstand shifting footprint stress typical of wide base service
- 20/32nds tread depth



XZH[®] WIDE BASE Pre-Mold™ Retread Data

Width	Tread Depth
350/395 mm ⁽¹⁾	20/32"

WIDE BASE RETREADS

XZY[®] WIDE BASE Pre-Mold™ Retread

- Compound for abrasion-resistance to promote long casing and tread life
- Tapered tread extensions to help withstand shifting footprint stress typical of wide base service
- 20/32nds tread depth



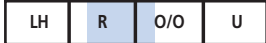
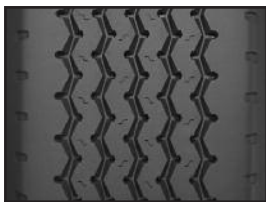
XZY[®] WIDE BASE Pre-Mold™ Retread Data

Width	Tread Depth
290/345 mm ⁽¹⁾	20/32"
320/365 mm ⁽¹⁾	20/32"
350/395 mm ⁽¹⁾	20/32"

WIDE BASE RETREADS

XZA[®] WIDE BASE Pre-Mold™ Retread

- Wide shoulder rib to help withstand scrub and abrasion
- Tapered tread extensions to help withstand shifting footprint stress typical of wide base service
- 19/32nds tread depth



XZA[®] WIDE BASE Pre-Mold™ Retread Data

Width	Tread Depth
290/345 mm ⁽¹⁾	19/32"
320/365 mm ⁽¹⁾	19/32"

LH – Long Haul, R – Regional, O/O – On/Off Road, U – Urban

(1) Tread widths with two measurements have wings. The first number is tread base width in mm. The second number is the overall width, wing tip to tip.

RETREAD TREAD DESIGN

X ONE RETREADS

X One® XDA® Pre-Mold™ Retread

- Unique fuel efficient compound, to help contribute to greater fuel savings
- Deep tread depth offering long tread life and excellent all-weather traction
- 24/32nds tread depth



X One® XDA® Pre-Mold™ Retread Data

Width	Tread Depth
380 mm	24/32"
390 mm	24/32"

X ONE RETREADS

X One® XDA-HT™ Pre-Mold™ Retread

- Aggressive lug-type tread design
- Increased traction*
- Increased tread wear*
- Optimized for Regional and Line Haul operations
- Deep 26/32nds tread depth
- Cool Running compound

* Up to 20% versus X One® XDA®



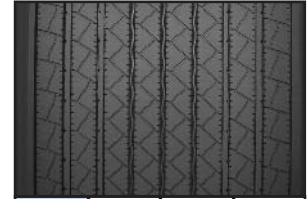
X One® XDA-HT™ Pre-Mold™ Retread Data

Width	Tread Depth
380 mm	26/32"
390 mm	26/32"

X ONE RETREADS

X One® XTA® Pre-Mold™ Retread

- Tread design optimized to promote stability and resistance to uneven wear
- Fuel-efficient Advanced Technology™ compound
- Tapered tread extensions to help withstand the stress of long haul trailer use
- 13/32nds tread depth



X One® XTA® Pre-Mold™ Retread Data

Width	Tread Depth
375/425 mm ⁽¹⁾	13/32"

X ONE RETREADS

X One® XTE® Pre-Mold™ Retread

- Tread design optimized to promote stability and resistance to uneven wear
- Scrub-resistant compound for regional operations
- Tapered tread extensions to help withstand the stress of regional trailer use
- 16/32nds tread depth



X One® XTE® Pre-Mold™ Retread Data

Width	Tread Depth
375/425 mm ⁽¹⁾	16/32"

LH – Long Haul, R – Regional, O/O – On/Off Road, U – Urban

(1) Tread widths with two measurements have wings. The first number is tread base width in mm. The second number is the overall width, wing tip to tip.

To learn more please contact your Michelin Sales Representative or visit
www.michelintruck.com

To order more brochures, please call Promotional Fulfillment Center
1-800-677-3322, Option #2 Monday through Friday, 9 a.m. to 5 p.m. Eastern Time

MICHELIN NORTH AMERICA, INC., Greenville, South Carolina, USA
MICHELIN NORTH AMERICA (CANADA) INC., Laval, Quebec, Canada
MICHELIN MEXICO S.A. DE C.V., Querétaro, Mexico

AN EQUAL OPPORTUNITY EMPLOYER

Copyright © 2008 MNA, Inc. All rights reserved.

MYL41642 (01/08)

